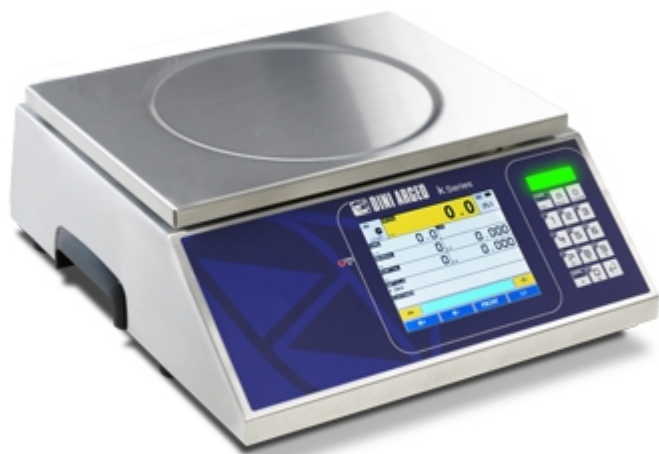


## KST

"KST" series stainless steel digital scales with touch screen display



New bench digital scales with stainless steel body and touch screen color display, simple and intuitive.

High weighing performances, thanks to the C6 OIML load cells (fitted as standard) and selectable application programmes for piece counting, statistical control, manual dosage, labelling and totalization.

The long lasting battery power supply and the lateral handles allow an easy transport of the scale directly where it is necessary.

Working in cooperation with:

**PENTIMEX S.R.O.**

TUZINA, 26 - 97214 - TUZINA - SLOVAKIA  
Tel. 00421-46-5431793 Fax. 00421-46-5431135  
[info@pentimex.sk](mailto:info@pentimex.sk)

**The best solution  
for advanced industrial  
applications**

## DIGITAL SCALES: TECHNICAL FEATURES

- STAINLESS steel digital scales body, resistant and easy to clean.
- Stainless steel load plate, inspectionable and easily cleanable. Dimensions: 250x340mm.
- OIML R60 C6 approved aluminium load cells.
- Supplied with alibi memory, integrated on the motherboard.
- Possibility of connection to one remote scale via serial, or of additional platforms (up to 3).
- Backlit graphic display with touch screen technology, lxh= 120x90mm size. Screens completely customizable.
- 3-colors control light.
- Waterproof keyboard and multifunctional programme.
- IP44 protection.
- Non-slip adjustable feet.
- Ergonomic lateral handle.
- Level positioned under the plate.
- Serial port RS232 for connection to PC or printer.
- Digital scale power supply: internal rechargeable battery (operating time 40h approximately) or external power supply/battery charger.
- TPRP integrated printer in KST6P and KST30P versions.

## DIGITAL SCALES: AVAILABLE APPLICATION PROGRAMMES

- The application programme of the KST digital scales series can be chosen according to the function to carry out:
  - AF01: Totalization and formulation (standard)
  - AF02: Piece counting/quantity (optional)
  - AF04: Statistic control of prepackaged goods (optional)
  - AF05: Weight / price industrial labelling (optional)
  - BATCH: Multicomponent manual dosage with archive of formulas (optional)

## MAIN CERTIFICATIONS OF THE KST SCALES

- The main certifications of KST scales are:
  - EU Type Examination Certificate (45501:2015)
  - OIML R76

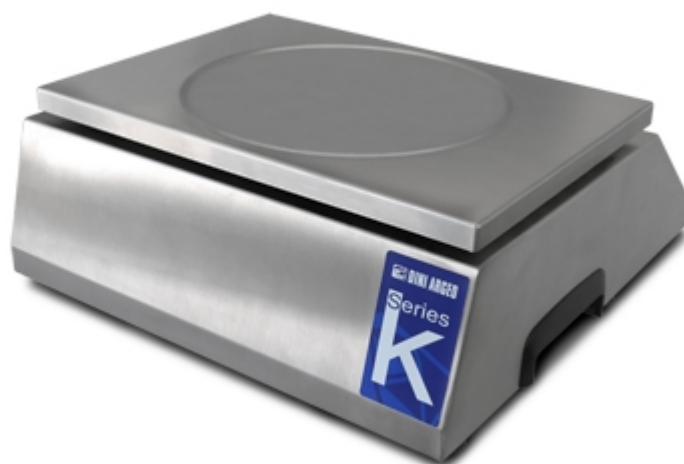
## DIGITAL SCALES: I/O SECTION

- 2 Serial ports RS232, for connection to printer, PC or PLC, radio module and optional interfaces.
- 1 Serial ports RS232 (RS485 optional), for connection to repeater, remote scale, badge reader or digital load cell.
- Fitted with keyboard emulation input, for connection to barcode/badge reader or PC external keyboard, through cable with mini DIN connector (optional).
- 4 opto-isolated outputs (optional).
- 2 opto-isolated inputs (optional).
- External Profibus interface (optional), for automation management.
- Modbus RTU interface.
- Optional Bluetooth connection, for wireless rapid archive configuration by PC, tablet or smartphone.

DETAIL 1



DETAIL 2



KSTP, with integrated thermal printer.

DETAIL 3




DETAIL 4



## VERSIONS

### Available versions

Codice	Max (kg)	d (g)	 2R (g) *
KST6	3/6	0,5/1	0,5/1
KST30	12/30	2/5	2/5
KST6P	3/6	0,5/1	0,5/1
KST30P	12/30	2/5	2/5

(\*) CE-M divisions are obtainable only with the relative options.



www.diniargeo.com



**DINI AR GEO**  
**FRANCE sarl**  
Nogent-sur-Marne

**DINI AR GEO**  
**GMBH**  
Sinsheim - Germany

**DINI AR GEO**  
**UK Ltd**  
Taunton - United Kingdom

**DINI AR GEO WEIGHING**  
**INSTRUMENTS Ltd**  
Shanghai - China

**DINI AR GEO**  
**WEIGHBRIDGES**  
Calto (RO) - Italy



**HEAD OFFICE**  
Via Della Fisica, 20  
41042 Spezzano di Fiorano - Modena - Italy



***PENTIMEX S.R.O.***

*TUZINA, 26 - 97214 - TUZINA - SLOVAKIA*

*Tel. 00421-46-5431793 Fax. 00421-46-5431135*

*info@pentimex.sk*

**SALES AND TECHNICAL ASSISTANCE SERVICE**