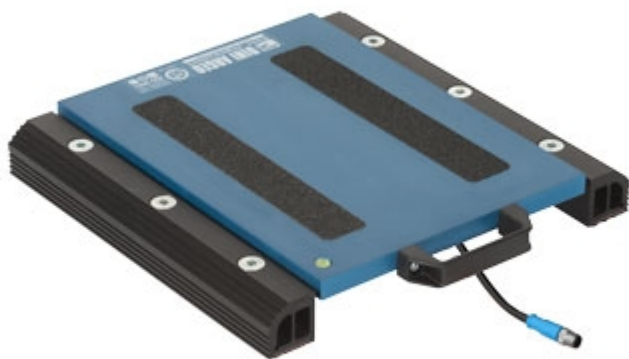


WWSB

"WWSB" WHEEL WEIGHING PADS



Pads designed to create weighing stations for small sized vehicles (automobiles, carts, vans, etc.); particularly accurate and sturdy, with attention to details.

Working in cooperation with:

PENTIMEX S.R.O.

TUZINA, 26 - 97214 - TUZINA - SLOVAKIA
Tel. 00421-46-5431793 Fax. 00421-46-5431135
info@pentimex.sk

**The best solution
for advanced industrial
applications**

FEATURES

- Pad dimensions: 400x410mm. Height 58mm. Weight approximately 14,5kg.
- Loading surface: 400x300mm.
- Very handy.
- Sturdy structure, made with special aluminium, which guarantees lightness and makes these suitable also for harsh working conditions.
- Cable with quick connector, pad side.
- 10m cable for connecting the pad to the indicator, complete of connector.
- IP67 nickel-plated steel loading cells.
- IP68 stainless steel load cells, in the WWSB versions with 6t and 8t capacity.
- Hermetic junction box with IP68 protection degree.
- Special vulcanised nonslip rubber applied under the pad, for good grip on all types of surfaces.
- Extremely simple and reliable connection of the scale to the weight indicator.
- The WWS pads are patented; the number is 1.342.302.
- Available in legal for trade approved version.
- Available in high resolution version.
- Available upon price estimate in Atex version for 1&21 e 2&22 zones.

NOTES ABOUT THE LEGAL FOR TRADE APPROVED VERSIONS


- The pads are for legal for trade use:
 - In the single-pad systems, not used to weigh vehicles.
 - In the wheel weighing systems in which the number of pads is equal to the number of vehicle wheels.
 - In the axle weighing systems composed of one or more multiples of WWS pads, except possible limitations of use for some European States.
- The CE-M legal for trade divisions indicated in the "version" table are available with ECEM option. ECEM option is needed for each legal for trade pad of the system.
- Legal for trade systems with more than one WWS, are fitted with the approval of the weight sum and related division:
Exemple for a 4 pads system
Single CE-M Pad: Max=1500kg and e=0,5kg
CE-M SUM: Max=6000kg and e=2kg

AXLE WEIGHING SYSTEM INSTALLATION:



VERSIONS

Available versions

Codice	l x w x h (mm)	Max (kg)	d (kg)	 (kg)	d HR (kg)*
WWSB600-1	400x300x58	600	0,2	0,2	--
WWSB1500-1	400x300x58	1500	0,5	0,5	--
WWSB3T-1	400x300x58	3000	1	1	0,1
WWSB6T-1	400x300x58	6000	2	2	0,2
WWSB8T-1	400x300x58	8000	5	5	0,5

(*) These divisions are obtainable only with the relative options



www.diniargeo.com



“YOUR WORLDWIDE PARTNER FOR WEIGHING,”

DINI AR GEO
FRANCE sarl
Nogent-sur-Marne

DINI AR GEO
GMBH
Sinsheim - Germany

DINI AR GEO
UK Ltd
Taunton - United Kingdom

DINI AR GEO WEIGHING
INSTRUMENTS Ltd
Shanghai - China

DINI AR GEO
WEIGHBRIDGES
Calto (RO) - Italy



HEAD OFFICE
Via Della Fisica, 20
41042 Spezzano di Fiorano Modena - Italy



PENTIMEX S.R.O.

TUZINA, 26 - 97214 - TUZINA - SLOVAKIA

Tel. 00421-46-5431793 Fax. 00421-46-5431135

info@pentimex.sk

SALES AND TECHNICAL ASSISTANCE SERVICE