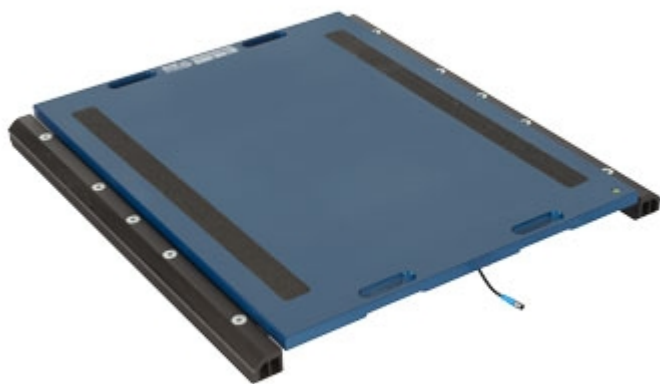


WWSF

"WWSF" series 900 x 700 mm WHEEL WEIGHING PADS



Pads designed for creating weighing stations for large sized vehicles fitted with twinned wheels (articulated lorries, tractor-trailers, building yard vehicles, etc.); fitted with handles on both sides for easing the transport and the positioning. Particularly suitable for dynamic weighing.

Working in cooperation with:

PENTIMEX S.R.O.

TUZINA, 26 - 97214 - TUZINA - SLOVAKIA
Tel. 00421-46-5431793 Fax. 00421-46-5431135
info@pentimex.sk

**The best solution
for advanced industrial
applications**

FEATURES

- Pad dimensions: 900x811mm. Height 75mm. Weight approximately 67kg.
- Loading surface: 900x700mm.
- Fitted with double handles on both sides for easing the transport.
- Sturdy structure, made in special aluminium, which guarantees lightness and makes these suitable also for harsh working conditions.
- Cable with quick connector, pad side.
- 10 m cable for connecting pad to indicator, complete of connectors.
- IP68 stainless steel load cells.
- Hermetic junction box with IP68 protection degree.
- Special vulcanised nonslip rubber applied under the pad for good grip on all surfaces.
- Extremely simple and reliable connection of the scale to the weight indicator.
- The WWS pads are patented; the number is 1.342.302.
- Available in legal for trade approved version.
- Available in high resolution version.
- Available upon price estimate in Atex version for 1&21 e 2&22 zones.

NOTES ON THE CE-M APPROVED VERSIONS


- The pads are for legal for trade use:
 - In the single-pad systems, not used to weigh vehicles.
 - In the wheel weighing systems in which the number of pads is equal to the number of vehicle wheels.
 - In the axle weighing systems composed of one or more multiples of WWS pads, except possible limitations of use for some European States.
- The axle weighing systems with 2 WWS pads and a 3590E "AF09" weight indicator are OIML R134 certified for the dynamic vehicle weighing, according to the legal standards in force in the Country of use.
- The CE-M legal for trade divisions indicated in the "version" table are available with ECEM option. ECEM option is needed for each legal for trade pad of the system.
- Legal for trade systems with more than one WWS, are fitted with the approval of the weight sum and related division:
Example for a 4 pads system
Single CE-M Pad: Max=1500kg and e=0,5kg
CE-M SUM: Max=6000kg and e=2kg

AXLE WEIGHING SYSTEM INSTALLATION:



VERSIONS

Available versions

| Codice | l x w x h (mm) | Max (kg) | d (kg) |  (kg) | d HR (kg)* |
|-----------|-------------------|-------------|-----------|---|---------------|
| WWSF10T-1 | 900x700x75 | 10000 | 5 | 5 | 0,5 |
| WWSF15T-1 | 900x700x75 | 15000 | 5 | 5 | 0,5 |
| WWSF20T-1 | 900x700x75 | 20000 | 10 | 10 | 1 |
| WWSF25T-1 | 900x700x75 | 25000 | 10 | -- | 1 |

(*) These divisions are obtainable only with the relative options.



www.diniargeo.com



“YOUR WORLDWIDE PARTNER FOR WEIGHING,”

DINI AR GEO
FRANCE sarl
Nogent-sur-Marne

DINI AR GEO
GMBH
Sinsheim - Germany

DINI AR GEO
UK Ltd
Taunton - United Kingdom

DINI AR GEO WEIGHING
INSTRUMENTS Ltd
Shanghai - China

DINI AR GEO
WEIGHBRIDGES
Calto (RO) - Italy



HEAD OFFICE
Via Della Fisica, 20
41042 Spezzano di Fiorano Modena - Italy



PENTIMEX S.R.O.

TUZINA, 26 - 97214 - TUZINA - SLOVAKIA

Tel. 00421-46-5431793 Fax. 00421-46-5431135

info@pentimex.sk

SALES AND TECHNICAL ASSISTANCE SERVICE